

## Nā Pō'ino Pele

### 'Ōwehe Laulā:

Ma kēia ha'awina, e hā'awi ana nā haumāna i nā pae pō'ino i nā wahi 'elima ma ka mokupuni o Hawai'i. E nānā ana nā haumāna i nā palapala 'āina e hō'ike i nā makani Kona, nā kahe 'ā pele hou, nā lua pele puka ea, a me nā kula ma ka mokupuni o Hawai'i. No nā wahi a pau (1) e hā'awi ana nā haumāna i kekahi pae pō'ino (assign hazard level), (2) e huli i ka pa'apū o ke kula (school density), (3) e ho'onui i ka pae pō'ino me ka pa'apū o ke kula a me (4) e ho'okumu i kekahi hō'ailona waiho'olu'u no nā pae pō'ino.

### Nā Pahuhopu:

E a'o ana ka haumana:

- e unuhi i kekahi palapala 'āina i mea e hā'awi i nā pae pō'ino (hazard levels) pili i ka hanana o ka lua pele;
- e unuhi i kekahi palapala 'āina i mea e 'ike i ka pa'apū o ke kula;
- e ho'omaulia i nā pae pō'ino (risk levels) pili i ka lua pele i nā wahi pa'apū pū'uo (populated); a me
- e ho'okumu i nā hō'ailona waiho'olu'u no nā pae pō'ino o nā pō'ino lua pele a me nā pa'apū kula i mea e hō'ike i ka maopopo 'ana o nā pae pō'ino e pane i nā nīnau.

### Nā Pane I Ka Pepa Ha'awina Haumana:

Pakuhi 1:

	Ka Puka Ea I Lalo O Ka Makani	Ka Lua Pele Puka Ea	Nā Kahe 'Ā pele Hou	Ka Huina Nui O Nā Pae Pō'ino
Wahi A	1	1	1	3
Wahi B	1	1	0	2
Wahi C	1	1	1	3
Wahi D	0	1	1	2
Wahi E	0	1	1	2

Pakuhi 2:

	Ka Helu O Nā Kula I Ka Wahi	Ka Pa'apū Kula (Rating)
Wahi A	3	1
Wahi B	2	1
Wahi C	12	3
Wahi D	6	2
Wahi E	1	0

1. A, C
2. C
3. Nui nā pō'ino lua pele, ka pa'apū ki'eki'e
4. Wahi C (Hilo), nui ka pa'apū a me ka pae pō'ino
5. 'Ākau o ka Wahi C. Aia ia ma ka 'ao'ao a'e o ke kahe 'ā pele hou a mamao aku mai ka lua pele puka ea e hāpai 'ia i nā kinoea e nā makani Kona. Maika'i nā wahi ma waena o C a me D. Aia kēia wahi me ka pae pō'ino ki'eki'e akā kokoke i nā kākā, he nui e pono ana ka haukapila.
6. E 'oko'a ana nā pane

Pakuhi 3:

	Ka Pae Pō'ino Mai Ka Pakuhi 1	Ka Pa'apū Kula Mai Ka Pakuhi 2	Ka Pō'ino (Pō'ino x Pa'apū)	Ka Hō'ailona Waiho'olu'u
Wahi A	3	1	3	melemele
Wahi B	2	1	2	'ōma'oma'o
Wahi C	3	3	9	'ula'ula
Wahi D	2	2	4	melemele
Wahi E	2	0	0	'ōma'oma'o

## Nā Pō'ino Pele

### Nā Pono Ha'awina:

- Ka Pepa 'Ike Haumana: “Nā 'Ā Pele A Me Nā Puka Ea”
- Ka Pepa 'Ike Haumana: “Nā Makani A Me Nā Wahi Kula”
- Ka Pepa Ha'awina Haumana: “Nā Pō'ino Pele”

### Ke Ka'ina Hana Ha'awina:

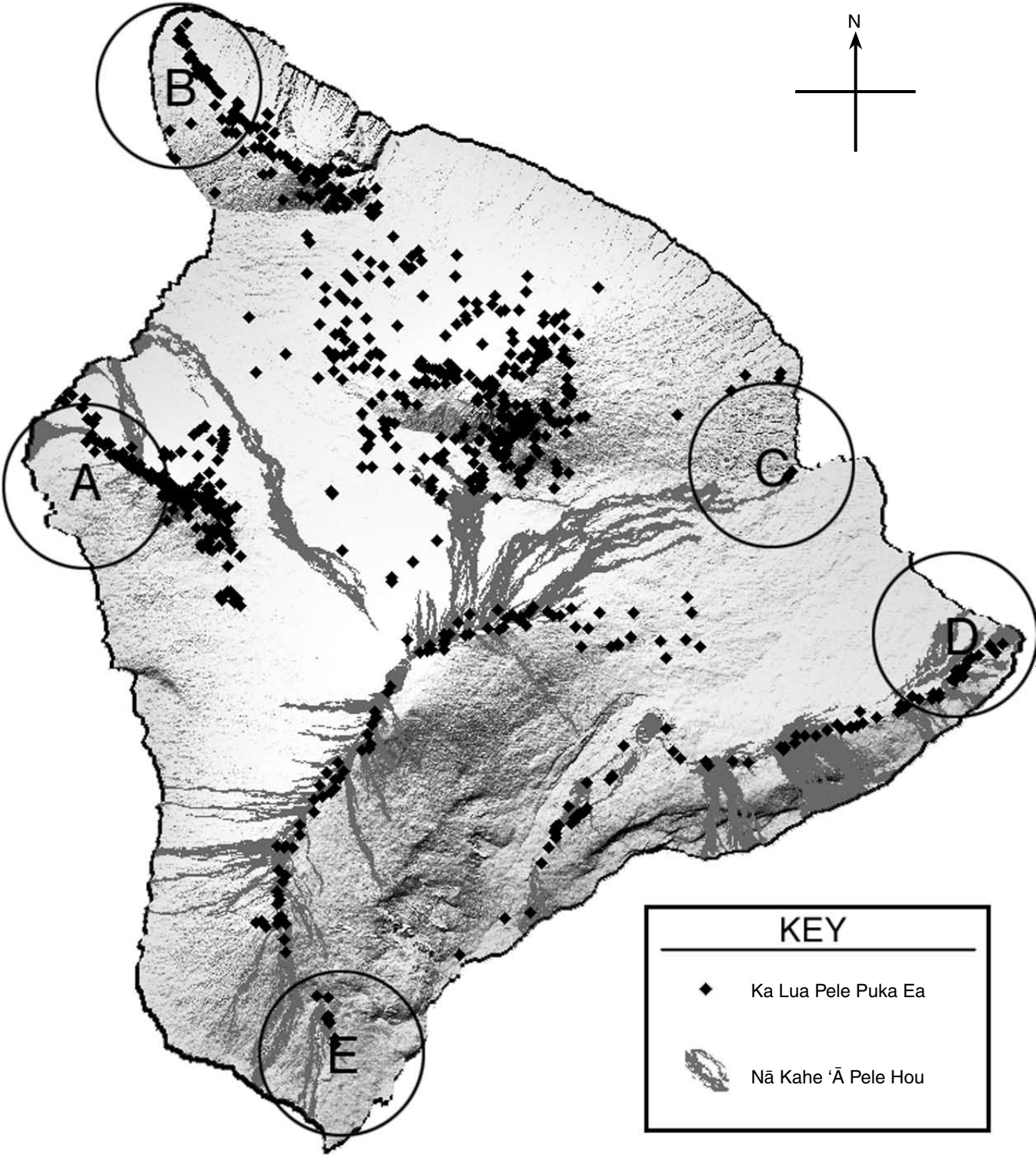
1. E wehewehe he mau pō'ino nā lua pele. Ma kēia ha'awina e nānā ana nā haumāna i 'elua palapala 'āina o ka mokupuni o Hawai'i a e ho'ohana ka 'ike ma nā palapala 'āina e hā'awi i nā pae pō'ino i 'elima mau wahi ma ka mokupuni. Ma ka palapala 'āina mua, ke hō'ike nei nā kahe 'ā pele i lua'i 'ia i 200 mau makahiki aku nei a me nā lua pele puka ea. Ma ka palapala 'āina lua, ke hō'ike nei nā makani Kona a me nā kula ma ka mokupuni o Hawai'i.
2. E kāka'ahi i nā Pepa 'Ike Haumana: “Nā 'Ā Pele A Me Nā Puka Ea” a me “Nā Makani A Me Nā Wahi Kula” a me ka Pepa Ha'awina Haumana: “Nā Pō'ino Pele.” Pono nā haumāna e hō'oiā i nā hi'ona nui ma nā palapala 'āina pākahi.
3. No ka hā'awi 'ana i nā pae pō'ino, e nīnau i nā haumāna e no'ono'o i nā pō'ino i hō'ike 'ia ma nā palapala 'āina a me ka mamao a i 'ole kokoke i nā wahi o nā pa'apū pū'uo nui. 'Ano like nā wahi 'elua me nā pae pō'ino, akā nui a'e ka pō'ino o ka wahi me ka pa'apū pū'uo nui.
4. E noi i nā haumāna e ho'omaka ma ka Pakuhi 1 ma ka Pepa Ha'awina Haumana: “Nā Pō'ino Pele” e huli i nā pae pō'ino o nā wahi pākahi. E wehewehe no nā wahi ma ka 'ao'ao i lalo o nā makani o kekahi puka ea, nā wahi e hāpai i nā kinoea mai ka puka ea mai waho a i nā wahi 'elima. E wehewehe 'a'ole maika'i inā noho kekahi ma ka 'ao'ao i lalo o ka puka ea no ka mea ho'oku'u nā kinoea mai ka puka ea a he pō'ino i nā kānaka a me nā holoholona.
5. Ma hope o ka ho'okō 'ana o ka Pakuhi 1, e noi iā lākou e ho'opiha ka Pakuhi 2 a e huli i ka pa'apū kula no nā wahi pākahi. Pono nā haumāna e helu papa i nā kula i kekahi wahi a ho'ohana i ka Pakuhi Pa'apū Kula e ho'ololi i kēia helu i kekahi pa'apū pālākiō (density rating).
6. Ma hope o ka ho'okō 'ana o ka Pakuhi 2, e wehewehe i nā haumāna e ho'ohana ana lākou i ka 'ike i a'o ai e ho'opiha i ka Pakuhi 3 a hā'awi i kekahi pae pō'ino no nā wahi 'elima pākahi. No ka pae pō'ino (risk level) pākahi, ho'onui i ka pae pō'ino (hazard level) a me ka pa'apū kula (school density rating) no ka wahi. E noi i nā haumāna e hō'oiā i nā waiho'olu'u pili i ka pae pō'ino.
7. E noi i nā haumāna e ho'ohana i nā Pakuhi 1 a i 3 e pane i nā nīnau ma ka Pepa Ha'awina Haumana: “Nā Pō'ino Pele.”
8. E kūkākūkā i nā pane o nā nīnau pākahi a pono nā haumāna e maopopo i ka ho'omaulia o ka pō'ino, pono nā pa'apū pū'uo a me nā pō'ino.



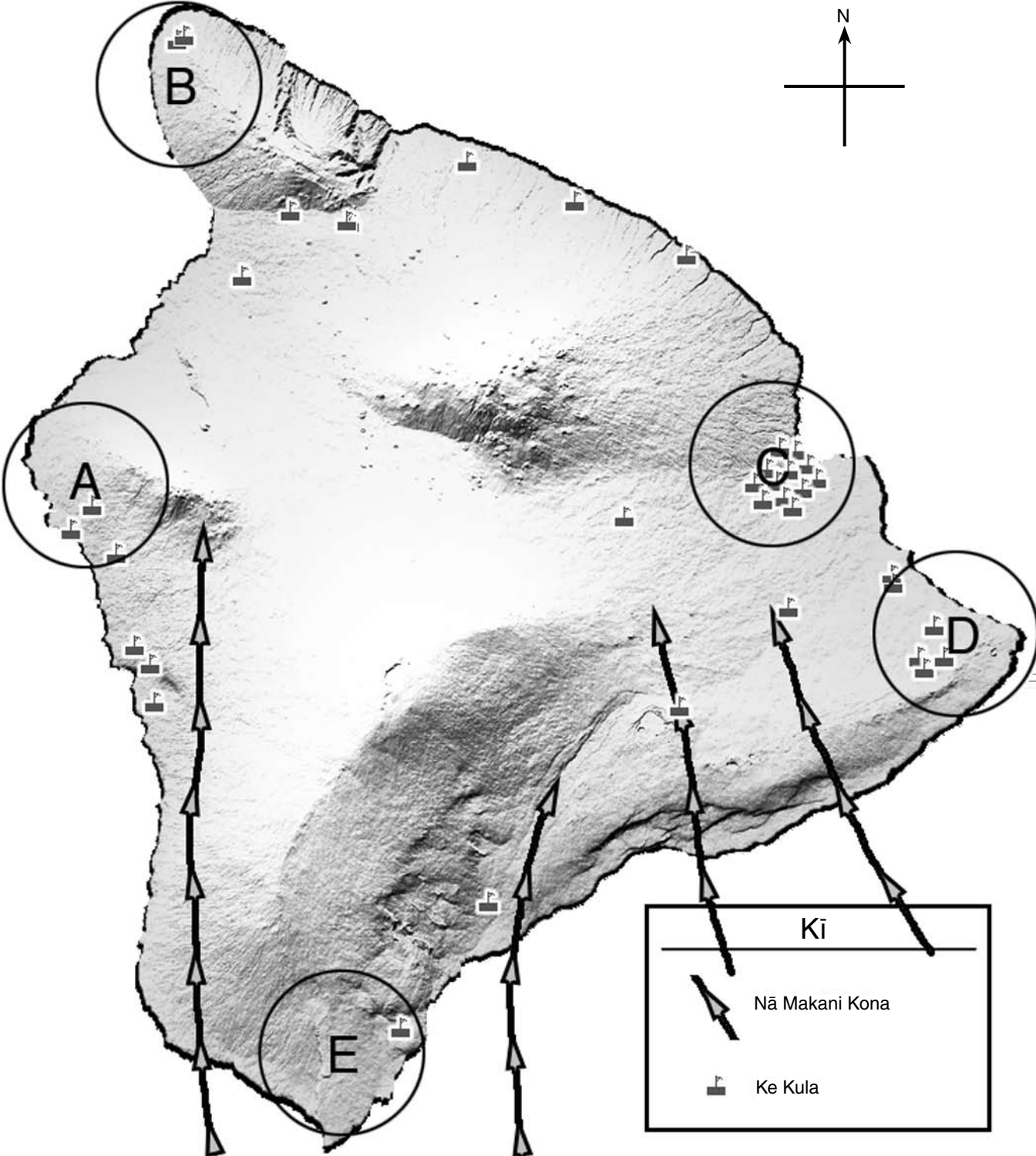
#### Pili I Ka Hawai'i

I ka makahiki 1868, ua ho'opō'ino ka mokupuni o Hawai'i i nā ola'i nui 'elua, ka lua'i nui, ke kai 'e'e a me ke kahe 'ūkele. Ua make nā kānaka he nui a ua ho'opau nā kūlanakauhale. Ua ho'olako 'o Kamehameha V, ke ali'i o kēia manawa, i mea'ai a me nā mea pono i nā wahi me ka pilikia nui.

Nā Kahe 'Ā Pele A Me Nā Puka Ea



Nā Makani A Me Nā Wahi Kula



## Nā Kahe 'Ā Pele A Me Nā Puka Ea

**Pakuhi 1:** E ho'ohana i ka Pepa 'Ike Haumana me kēia ha'awina e hā'awi i ka pae pō'ino no nā pō'ino pākahi i nā wahi ma ka pakuhi. E kākau i ka helu 1 inā he pō'ino maoli nō, a e kākau i ka helu 0 inā 'a'ohe pō'ino. E huli i ka pae pō'ino huina nui no nā wahi pākahi.

Pakuhi 1:

	Ka Makani I Lalo O Ka Puka Ea	Ka Puka Ea	Nā Kahe 'Ā Pele Hou	Ka Huina Nui O Nā Pae Pō'ino (sum of threats)
Wahi A				
Wahi B				
Wahi C				
Wahi D				
Wahi E				

**Pakuhi 2:** E kākau i ka helu o nā kula (a me nā kula kokoke i nā palena) i ke kōlamu mua. E ho'ohana i ka Pakuhi Pa'apū Kula e huli i nā pa'apū ratings a e ho'opiha i ke kōlamu lua.

Pakuhi 2:

	Ka Helu O Nā Kula I Ka Wahi	Ka Pa'apū Kula (Rating)
Wahi A		
Wahi B		
Wahi C		
Wahi D		
Wahi E		

Ka Pa'apū Kula	
Ka Helu O Nā Kula	Ka Pa'apū (Rating)
0 a i 1	0
2 a i 4	1
5 a i 10	2
10 a 'oi	3

**Pakuhi 3:** E kākau i nā pō'ino mai nā Pakuhi 1 a me 2 i nā hakahaka o ka Pakuhi 3. E ho'omaulia i ka pō'ino i ka ho'onui 'ana i nā helu 'elua. I ke kōlamu hope e kākau i ka waiho'olu'u 'ula'ula i nā pae pō'ino no nā helu 6-9, e kākau i ka waiho'olu'u melemele i nā pae pō'ino no nā helu 3-5, a e kākau i ka waiho'olu'u 'ōma'oma'o i nā pae pō'ino no nā helu 0-2.

Pakuhi 3:

	Ka Pae Pō'ino Mai Ka Pakuhi 2	Ka Pō'ino (Ka Pō'ino x Ka Pa'apū Kula)	Ka Hō'ailona Waiho'olu'u
Wahi A			
Wahi B			
Wahi C			
Wahi D			
Wahi E			

